

SOLUTIONS TO PROJECT CARGO MOVEMENTS START HERE



Responsive & On-Time



ROHDE & LIESENFELD CANADA INC.





PROJECT FOCUSED



PROJECT EXPERIENCED



ROHDE & LIESENFELD CANADA INC.



OUR PEOPLE MAKE IT HAPPEN!



Corporate Data

- Rohde & Liesenfeld Canada Inc. was incorporated in Canada in July of 2001 as a 50/50 partnership between Jan Beringer and Rohde & Liesenfeld International GmbH & Co. As a result of the acquisition of R&L worldwide by Geodis-Wilson effective January 1st, 2008, Geodis-Wilson is now the 50% partner in R&L Canada. R&L Canada is a federally registered corporation in Canada.
- R&L Canada's headquarter's are located in Calgary. Additionally, the company has a physical branch office in Edmonton, two In-house logistics offices in Vancouver, and two virtual office locations used for sales purposes, one in Vancouver and one in Toronto.
- The company has annual sales revenue of CAD \$30 million dollars with a dedicated work force of 12 experienced senior project managers and variable contract support staff employed as required.
- The company focuses on transportation of heavy-lift and extreme dimensional cargos from worldwide points into Canada and the United States.



ROHDE & LIESENFELD CANADA INC.



Montreal Agent Office

Vancouver Sales Office

Calgary Head Office

Edmonton Branch Office

Toronto Sales Office

c/o

Sea Projects Alliance
194 St Paul West,
Suite 402

Montreal, PQ, H2Y 2Z8

Tel: 514-848-0448

Fax: 514-848-0552

500 Park Place
666 Burrard Street
Vancouver, B.C. V6C 3P6

Tel: 604-676-5248

Fax: 604-688-2419

1600 Sun Life Plaza, West Tower
144 - 4th Ave SW
Calgary, AB T2p 3N4

Tel: 403-514-6907

Fax: 403-269-3537

www.rolicanada.com

11315 - 163 St.,
Edmonton, AB, T5M 1Y7

Tel : 403-514-6907

Fax: 866-225-7140

2425 Matheson Blvd.
East, 8th Fl.

Mississauga, ON,
L4W 5K4

Tel: 905-361-6400

Fax: 905-361-6401

Jan Beringer
President & CEO

Daniel Cleary
President

Brian Watkins
Branch Manager

Catherine Borisyuck
Branch Manager - VP Projects

Chris Beringer
Branch Manager

Bridgeen Briggs
Project Consultant

Donna Storozuk
Operations Manager

Nana Raouf
Pricing Manager

Chris J. Best
VP – International Sales & Marketing

Vacant Position
Operations

Dalia Avila
Operations

Elissa Bruce
Operations

PROJECT DIVISION

Sue Schweizer
Project Operations & Pricing

PROJECT CONSULTANTS

Rhonda Bellusci
(Business Development)

Frank Hall
(Business Development Manager - Oil Sands)

David Gaskin
(Project Finance & Contracts)



ROHDE & LIESENFELD CANADA INC.

Specialized Over-Dimensional Global Logistics Projects



AIR

TRUCK



RAIL

OCEAN



ROHDE & LIESENFELD CANADA INC.



Project Logistics Services

- ⦿ Maximum Size & Weight Envelope
- ⦿ Offshore Entry Points (West Coast, Gulf Coast, East Coast, Great Lakes)
- ⦿ Engineered Load Designs / Cost vs. Benefit
- ⦿ Shipping Times vs. Construction Times
- ⦿ Politics and Transportation
- ⦿ Planning / Execution / Benefits / Risk Analysis
- ⦿ Canada & USA Rail Negotiations



Logistics Ties in Globally

- ◎ Collaborative Effort – No One Person has all the answers
- ◎ Engage Decision Makers who can be innovative and push the Envelope
- ◎ Dealing with experienced partners
- ◎ Off-Shore Sourcing = Global Network of Project Experienced Partners which provides for accurate Risk/Cost/Time feedback
- ◎ Worldwide Agents – Geodis Wilson and GPLN Network.

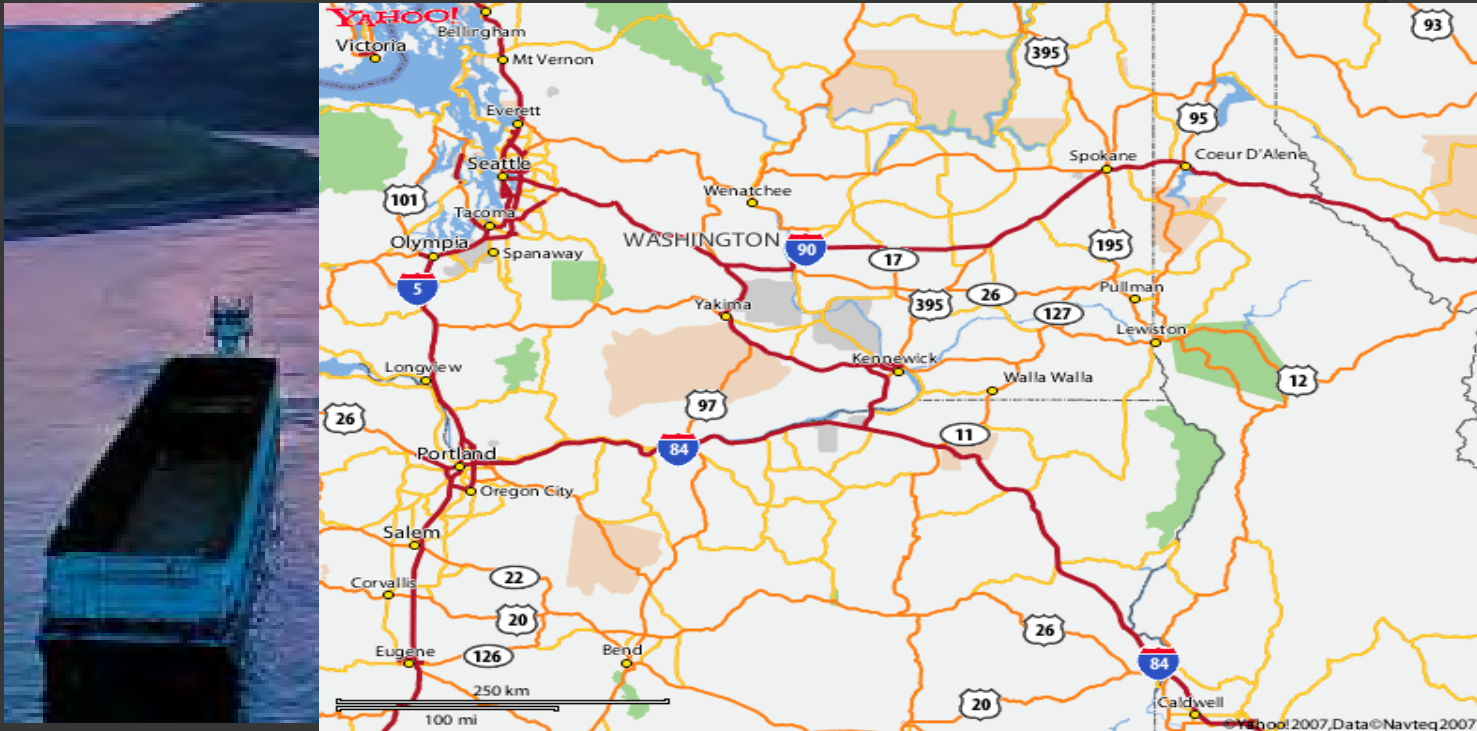


Dimensional
Maximum
Constraints for
Truck
Transportation:
Canada / USA
Origins to Fort
McMurray

Origin	Transport Mode	Cargo Length (ft)	Cargo Width (ft)	Loaded Height (ft)	Cargo Weight (lbs)
Vancouver	Truck	100	14.5 - 24	12 – 14*	150,000
Vancouver	Rail	110	12.5	13	700,000
Texas (Houston)	Truck	100	24	24	200,000
Texas	Rail	110	13.5	15	1,000,000
Southern States	Truck	150	24	13	150,000
Southern States	Rail	100	13	13	1,000,000
US East	Truck	125	16	16	115,000
US East	Rail	100	12.5	15	1,000,000
Ontario & Quebec	Truck	150	16.5	16.1	200,000
Ontario & Quebec	Rail	110	14	15	1,000,000
Alberta	Truck	200	24	29	1,400,000
Alberta	Rail	110	14.5	15	1,000,000



Columbia River: Over-Dimensional Entry Point



- A series of slack water lakes allow barges to navigate more than 465 miles from the Pacific to the inland port of Lewiston, Idaho. The Federal navigation channel from McNary Dam on the Columbia River, through the four lower Snake River projects, provides a navigable waterway connection inland to Lewiston, Idaho. The river ports at Walla Walla and Pasco are used to enable loads exceeding 165,000 LBS (75,000 KG) and up to 18' in height to be barged through the Cascade Mountains and then moved by Highway trailer through Idaho up into Alberta.

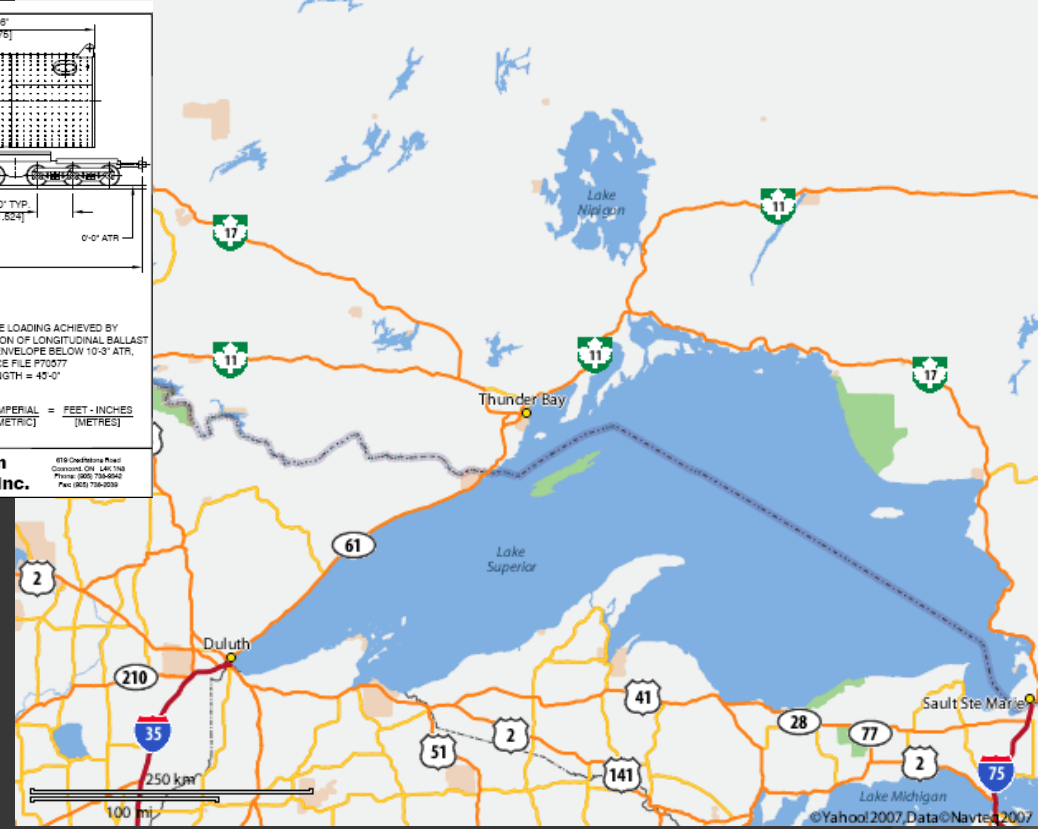
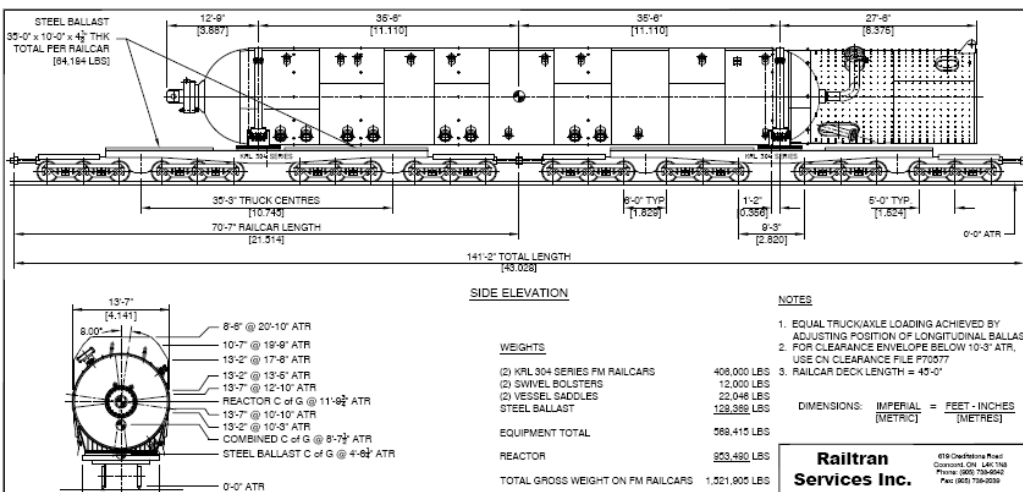


ROHDE & LIESENFELD CANADA INC.

9/14/2009



Thunder Bay – Over-Dimensional Entry Point



Ocean vessels can transit through the St. Lawrence Seaway and through the Great Lakes to the ports of Duluth and Thunder Bay during the navigation season of early April to December. The port of Thunder Bay has direct CN rail access, whereby Duluth requires

interchange with BNSF, and then CN Rail through to Boyle and Athabasca Northern rail road through to Lynton siding, Ft. McMurray. Rohde & Liesenfeld Canada is currently pushing the limits of this corridor with the planned rail movement of a Distillate Reactor measuring 34.482 x 4.225 x 4.550 meters and weighing 442.5 metric tonnes.



ROHDE & LIESENFELD CANADA INC.

9/14/2009



Industries We Serve:

- Oil & Gas
- Power Generation
- Mining
- Plant Relocation
- Exploration



ROHDE & LIESENFELD CANADA INC.



Who are Some of Our Clients:

- SNC Lavalin – Preferred Vendor
- Suncor (Oil Sands)
- CNRL (Oil Sands)
- Hatch Engineering
- Baja Mining
- AMEC Engineering
- ENMAX Green Power
- Precision Drilling

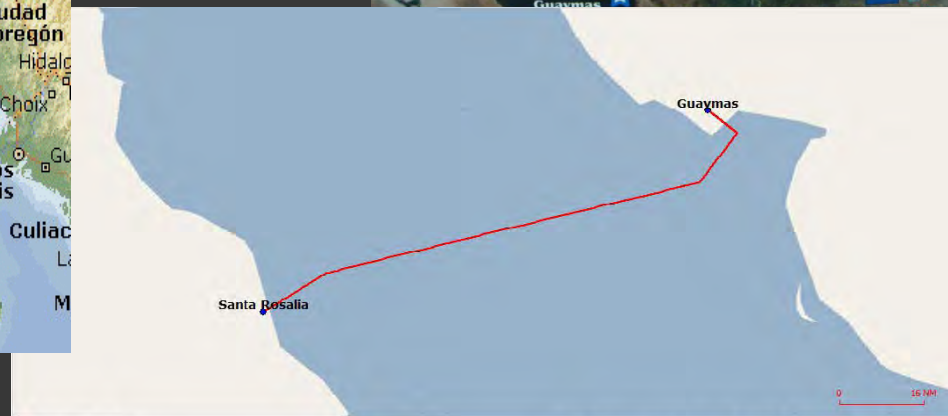
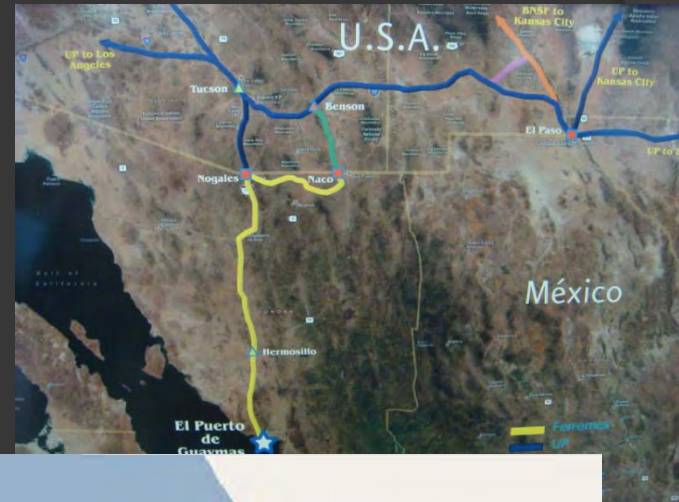


ROHDE & LIESENFELD CANADA INC.



Major Projects Currently Being Handled

- Baja Mining, Vancouver, “El Boleo“ Project, Santa Rosalia, Baja Peninsula, Mexico, USD \$30 Million Freight Budget, 180,000 FRT’s, Origin of Cargo Worldwide. Starting Date March, 2008 expected duration 2 years.



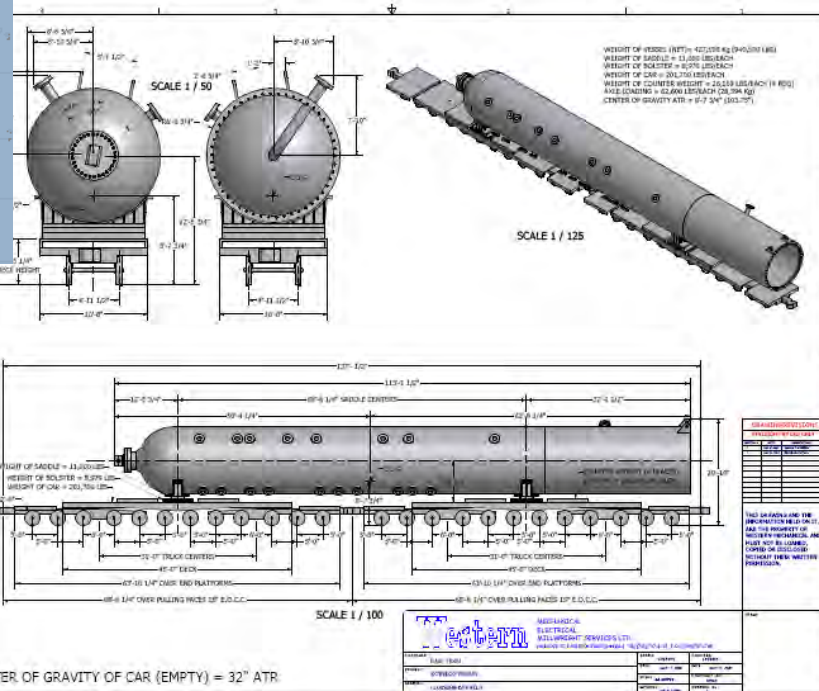
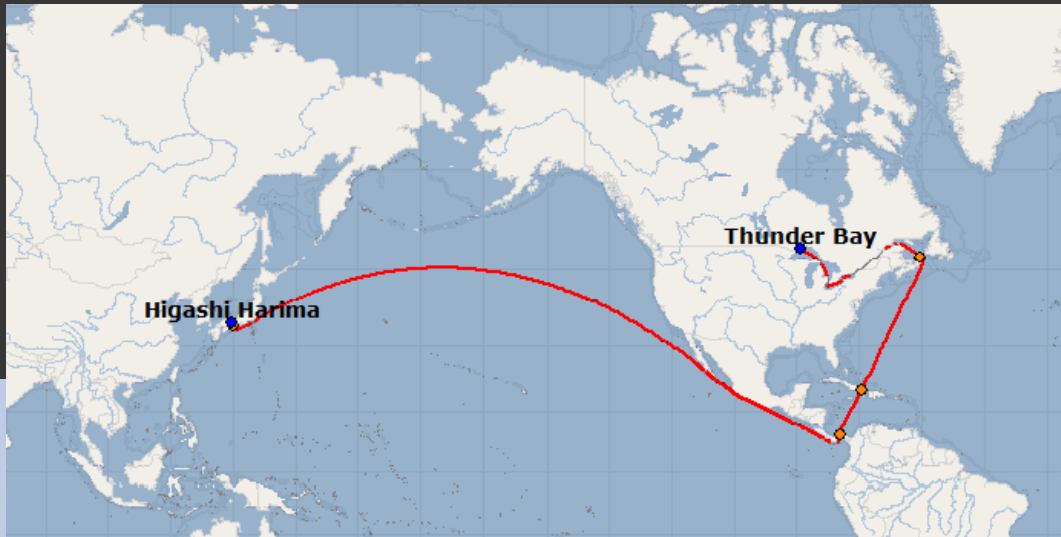
Vessel Monitor Beta		94 NM	0.56 days	Speed: 7.0	kt's	Results	Options	
No	Port name or Coordinates	Distance & Weather	Speed	Sea	Port	Port Charge	Arrival	Departure
1	Guaymas (MX) [GMT-07:00]					0.00		click
2	Santa Rosalia (MX) [GMT-07:00]	94	0%	7.00	0.56	0.00		
3								
4								
5								
6								
Total		94 NM		0.56	0.00	0.00		



ROHDE & LIESENFELD CANADA INC.



◎ CNRL, Calgary, Oil Sands Expansion, Ft. McMurray, Canada, USD \$2.9 Million Freight Budget, Movement of one 450 Ton Reactor 34.482 x 4.225 x 4.550 meters , Origin Japan. Starting Date March 2008, Final Delivery to Ft. McMurray Dec, 2008.



ROHDE & LIESENFELD CANADA INC.



◎ CMI, Erie, PA, Boiler Equipment ex Korea and Thailand, Multiple Project Locations Worldwide, Freight Budget USD \$10 Million Annually, Current Projects:

- 2 x Gas Fired Power Plants, Siemens, Argentina, Completion June, 2008
- 1 x Gas Fired Power Plant, G.E., Russia, Completion, August, 2008
- 1 x Gas Fired Power Plant, G.E., Ireland, Pending Award



ROHDE & LIESENFELD CANADA INC.



Agrimax Corp, Iricana (Calgary),

Bulk Sulphur in 1 ton Jumbo Bags, Freight Expenditure approx. USD \$3 - 4 Million

20,000 mt's = 1,050 x 20', Destination Port, Qingdao, China

2,000 mt's = 95 x 20', Destination Port, Mumbai, India

400 mt's = 20 x 20', Destination Port, Chittagong, Bangladesh



Forwarder Logic Extranet - Internet Explorer provided by Dell

http://www.forwarderlogic.com/flogicextranet/flex_asp/frame_def.asp?action_page=status.asp

Sheraton Calgary Hotels: S... Forwarder Logic Extranet

ROHDE & LIESENFELD

Status Tracking Quote PO Management Tools EditTracker Log Off

Welcome: Agrimax Logistics
Status Screen For: AGRIMAX LIMITED

Shipment List

No.	Shipment Ref.	Shipper	Origin	Consignee	Port of Discharge	BOL/AWB/PRO	Voyage/Flight	ETD	ETA	Final Destination	Place of Delivery	Delivery Date	Status	EDITra
1	59100-0804059	AGRIMAX LIMITED	VANCOUVER, BC		QINGDAO		OOCL France V64W18	05/01/2008	05/20/2008		QING DAO			
2	59100-74017	AGRIMAX LIMITED	MONTREAL, QUE	intertec s.r.l	LIVORNO		GLORY 316E	04/21/2006	05/03/2006	LIVORNO	LIVORNO			
3	59100-54032	AGRIMAX LIMITED	MONTREAL, QUE	intertec s.r.l	LIVORNO		CANMAR VALOUR 188	04/22/2005	05/06/2005	LIVORNO	LIVORNO			
4	59100-53036	AGRIMAX LIMITED	MONTREAL, QUE	intertec s.r.l	LIVORNO		CANMAR GLORY 288	03/18/2005	03/30/2005	LIVORNO	LIVORNO			
5	59100-42021	AGRIMAX LIMITED	MONTREAL, QUE	intertec s.r.l	LIVORNO		CANMAR TRIUMPH A4498	12/10/2004	12/22/2004	LIVORNO				
6	59100-40003	AGRIMAX MARKETING LIMITED	MONTREAL, QUE	intertec s.r.l	LIVORNO		CANMAR TRIUMPH 4482	10/15/2004	10/27/2004	LIVORNO	LIVORNO			
7	59100-39032	AGRIMAX LIMITED	MONTREAL, QUE	INTERTEC S.R.L.	LIVORNO		C/M TRIUMPH A4476	09/17/2004	09/29/2004	LIVORNO	AR			
8	59100-38060	AGRIMAX LIMITED	VANCOUVER, BC	A.R. MALIK & COMPANY (PVT) LTD.	CHITTAGONG		EVER URANUS 0134-043w	08/30/2004	10/04/2004	BANGLADESH	CHITTAGONG			
9	59100-38032	AGRIMAX LIMITED	MONTREAL, QUE	CHARLES KENDALL FREIGHT LIMITED	THAMESPORT		CAST PROSPECT A4066	08/18/2004	08/25/2004		GAINBOROUGH			
10	59100-38030	AGRIMAX LIMITED	VANCOUVER, BC	A.R. MALIK & COMPANY (PVT) Ltd.	CHITTAGONG		EVER UNISON 0133-070W	08/23/2004	09/27/2004	CHITTAGONG	CHITTAGONG			
11	59100-36062	AGRIMAX LIMITED	MONTREAL, QUE	INTERTEC SRL	LIVORNO		CM TRIUMPH A4452	06/25/2004	07/07/2004	LIVORNO	LIVORNO			
	59100-	AGRIMAX	VANCOUVER	To the order of			EVER UNISON				CHITTAGONG			

Internet | Protected Mode: Off

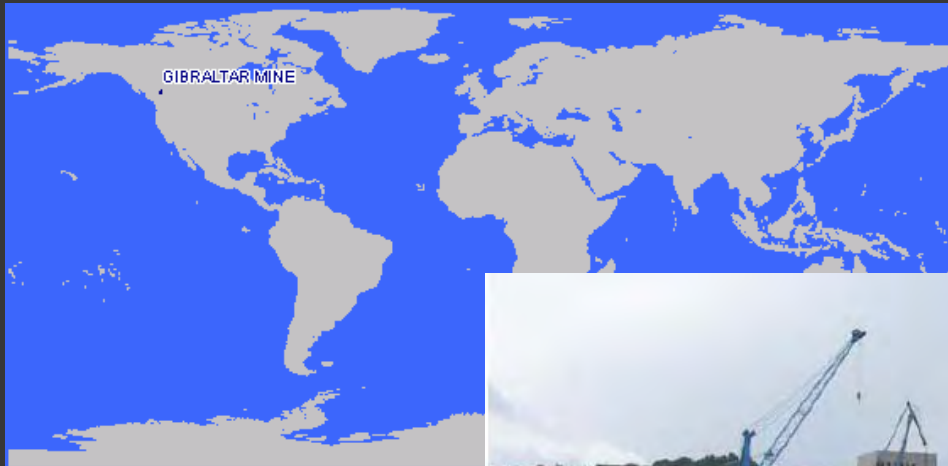


ROHDE & LIESENFELD CANADA INC.



Gibraltar Mines, Vancouver (Hatch Engineering), Mine Expansion, Vertimill and Crusher Stations, equipment ex Spain and truck cargo ex USA & Canada, USD \$1,750,000 Freight Budget, Starting Date April 2008, expected Duration 6 months.

The Gibraltar mine is located near Williams Lake in central British Columbia, Canada. It is an open pit copper-molybdenum mine.



ROHDE & LIESENFELD CANADA INC.

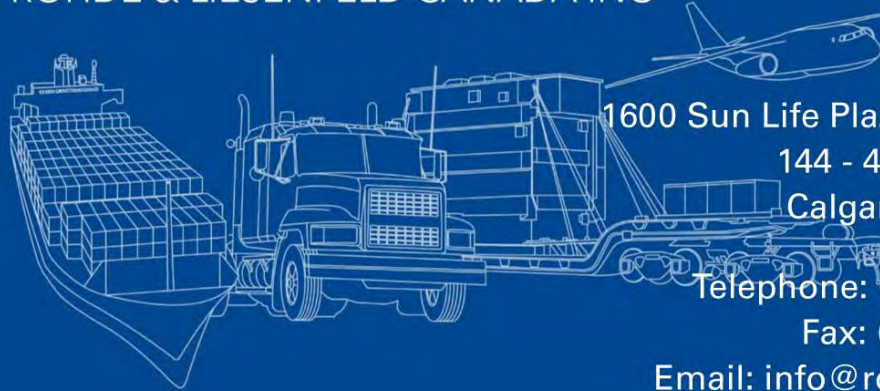


We're There When You Need Us

No Matter Where You Need Us



ROHDE & LIESENFELD CANADA INC



1600 Sun Life Plaza, West Tower
144 - 4th Avenue SW
Calgary, AB T2P 3N4

Telephone: (403) 514-6907

Fax: (403) 269-3537

Email: info@rolicanada.com

- www.rolicanada.com
- Geodis Wilson Industrial Projects (www.geodiswilson.com)
- Global Project Logistics Network (www.gpln.net)
- Canadian International Freight Forwarders Association (www.ciffa.com)

The logo for Rohde & Liebsfeld, consisting of the letters 'RL' in a bold, blue, sans-serif font. The 'R' and 'L' are connected at the top. The logo is set against a yellow rectangular background.

ROHDE & LIESENFELD CANADA INC.

